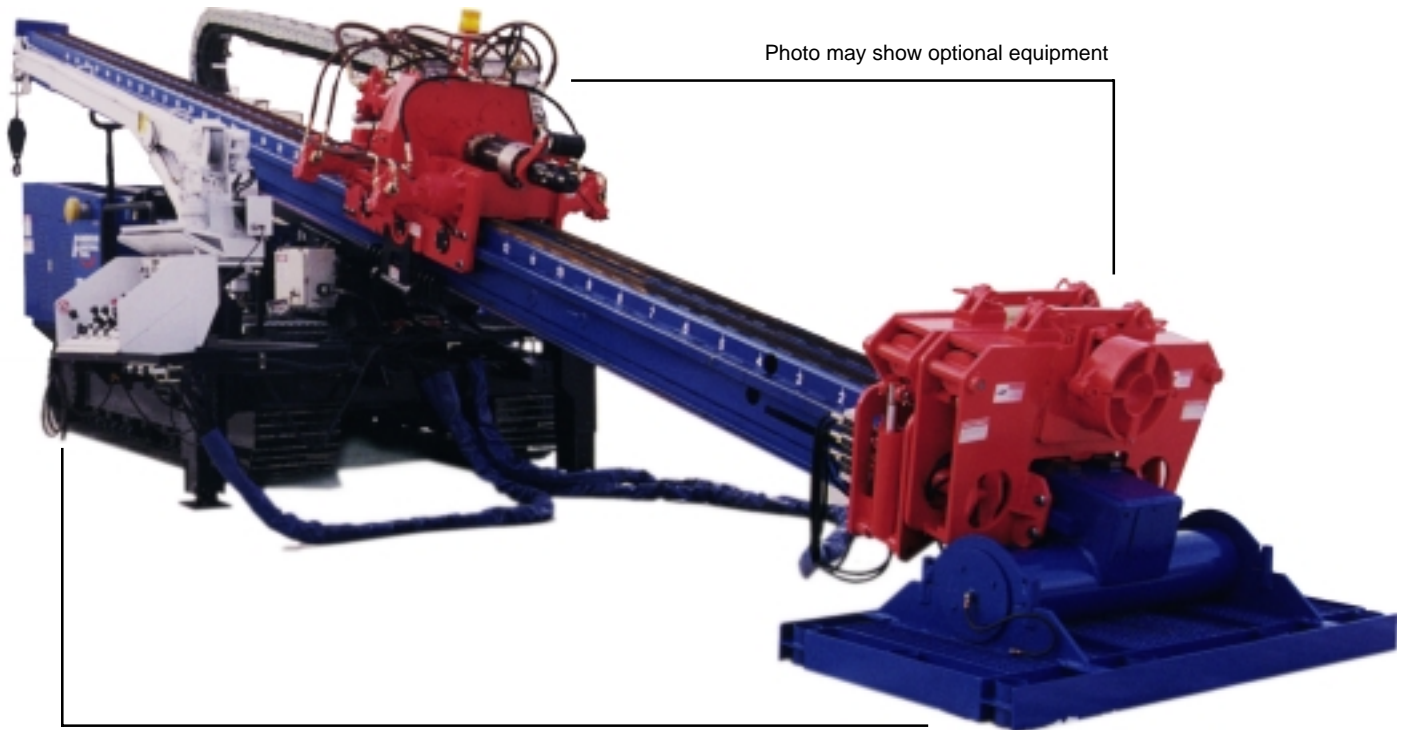




DD-140B™

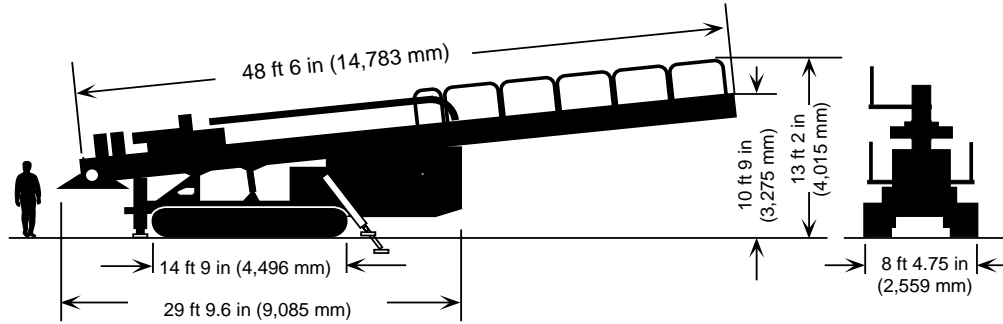
Track Mounted Directional Drill



Compare These Features To Those Of Any Other Drill

- MANUFACTURED by the world's most experienced builder of large directional drills
- THRUST/ PULLBACK rating of 140,000 lb (622.7 kN)
- HIGH ROTARY TORQUE turns very large reamers in long bores (25,000 lb ft, 33,895 Nm)
- RACK AND PINION thrust/pullback, two pinion drive
- CATERPILLAR® diesel power
- CLAMP & WRENCH can be repositioned within 60" range for most convenient make up and break out
- ADJUSTABLE TORQUE LIMITER for rotary and makeup force
- ADJUSTABLE FORCE LIMITER for thrust and pullback
- REAR DOWNRIGGER hydraulic thrust stabilizers
- INDEPENDENT CONTROLS and hydraulic circuits for thrust/pullback, torque and auxiliary operations permits simultaneous full power operation
- WIRELINE COMMUTATOR for speedy hookup of wireline guidance equipment with terminals at driller's console
- TRACK MOUNTED with on board engine
- FIELD PROVEN PIPE HANDLING with remote control hydraulic crane
- FACTORY DIRECT SERVICE for fast support by knowledgeable technicians
- MATCH UP WITH MUD SYSTEMS designed and built by American Augers such as the MP-300 or MP-400. These systems have integral mixing, cleaning and pumping capability, and enough capacity for mud motor work and use of large reamers

DD-140B Directional Drill



Engine

Engine	Caterpillar® 3306 DITA 6-cylinder turbodiesel, aftercooled
Rating	300 HP (224 kW) continuous duty
Fuel capacity	150 U.S. gallons (568 L)

Rotary Drive

Rotary system	Pinion and gear drive Infinitely variable torque
Rotary (high torque)	25,000 ft-lb (33,750 Nm) @ 0-45 rpm
Rotary (low torque)	10,000 ft-lb (13,500 Nm) @ 0-95 rpm
Max. rotary speed	95 rpm
Other features	Rear mounted mud swivel, 3" (76mm) internal diameter, dual drive brakes, slip sub, digital tachometer, wireline commutator, 5-1/2" API full hole box connection, adjustable torque limiter

Carriage Drive

Max. thrust/pullback	140,000 lb (622.7 kN)
Carriage system	Rack and pinion, four pinion drive, with adjustable force limiter
Max. carriage speed	95 ft (29 m)/min

Drill Pipe

Length	Range 2 (to 34 ft) 10,360 mm
--------	------------------------------

Tooling

American Augers supplies a full range of dirt and rock bits, tri-cones, sonde housings, swivels, cutters, hole openers and reamers developed from making thousands of feet of bores.

Drill Rig

Wrench/clamp	Open top type, 10" (254 mm) separation. Wrench can travel 60" (1,524 mm) fore and aft
Max. breakout torque	60,000 ft-lb (81,000 Nm)
Max. makeup torque	25,000 ft-lb (33,750 Nm)
Clamp grip range	2-3/4 - 10-3/4" outside diameter
Operator's controls	Rig mounted console with gauges
Drill angle	10°—18°
Travel system	Self propelled on Caterpillar® 320L excavator tracks
Drill mounted crane	8,000 lb (3,629 kg) rating
Shipping weight	58,000 lb (26,300 kg)
Hold down stakes	H-beam type

Protective Equipment

Each drill comes with safety mats and electrical grounding rods. A Zap-Alert system is standard equipment. Emergency shut down switch at driller's console and at remote control console. Carriage over ride switch disables carriage during wireline hookup, maintenance, etc. Halogen work lights are standard. The **es!lok**® exit side lockout system is standard equipment.

Driller's Cabin (optional)

With heat and air conditioning, power distribution panel with circuit breakers, surveyor's table. Exterior steel siding. Insulation 3-1/2" in walls. Extra large windows with vandalism shields. Lifting eyes for job site mobility. Cabin size: 7 ft 9 in wide x 10 ft 10 in long x 8 ft 6 in high (2.4 x 3.3 x 2.6 m). Approx. shipping weight: 6,000 lb. (2,725 kg).



Due to our continuing product improvement, specifications are subject to change without notice.

American Augers, Inc., 135 U.S. Route 42, P.O. Box 814, West Salem, OH 44287

TEL: (419) 869-7107 • FAX: (419) 869-7425 • USA Toll Free (800) 324-4930

www.americanaugers.com