

42-600™

42 INCH (1067 mm)



Horizontal Earth Boring Machine



Photo may show optional equipment

Dependable boring performance for crossings up to 42 inches in diameter.

The model 42-600 boring machine gives solid performance day in and day out. Now with the water cooled Deutz turbo diesel engine, there is higher horsepower, higher torque and less noise. This rugged machine can deliver torque over 116,000 ft-lb! There is 600,000 pounds of forward thrust to drive casings from 12 to 42 inches.

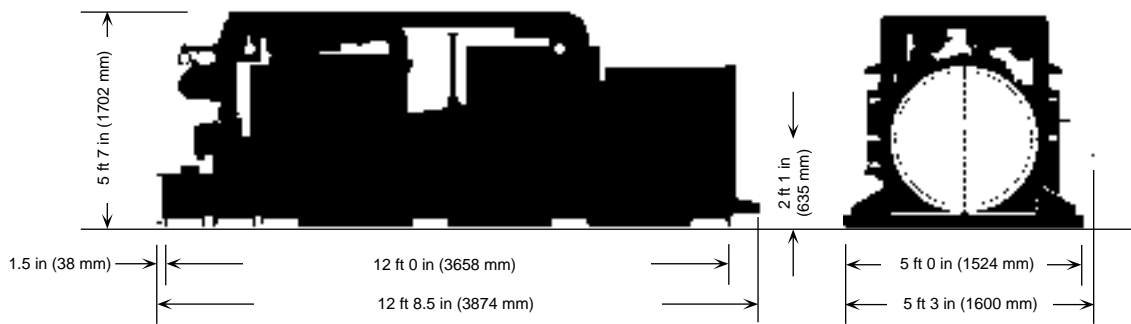
American Augers' unitized box frame construction assures lasting

alignment of the power train. We have never had a frame failure in more than 30 years of production. Wide stance and low centerline assure machine stability. True Quik-Split™ design allows the machine to separate into sections for faster, easier lifts into and out of the pit.

Machine controls are clustered for easy operation. The 42-600 has an electric starter and an emergency switch for total machine shutdown. Warning lights

monitor engine oil pressure and the alternator. The tachometer, fuel and hydraulic system gauges are in direct view. The clutch and shift levers are within easy reach. A spring loaded spoil chamber door deflects thrown debris. Vivid graphics guide safe and proper operation.

Model 42-600 Earth Boring Machine



Power train

Engine type	DEUTZ BF4M1013 turbodiesel Water cooled with electric start
Rating	126.5 HP (94 kW) @2300 RPM maximum power 106 HP (79 kW) @2300 RPM continuous duty
Fuel capacity	10 U.S. gallons (37.9 L)
Clutch	Dry, spring applied 13 inch (330 mm) diameter
Transmission	Spicer five speed constant mesh
Ratios	1st gear — 7.17:1 2nd gear — 4.21:1 3rd gear — 2.54:1 4th gear — 1.45:1 5th gear — 1.00:1 Reverse — 7.17:1
Gearbox ratio	54.2:1
Auger drive	3 inch (76.2 mm) hex or 4 inch hex (101.6 mm)
Working range	12 to 36 inch (305 to 914 mm) casing diameter

Torque & speed (max)[†]

1st gear	116,000 ft lb (157,000 Nm), 6 RPM
2nd gear	68,000 ft lb (92,000 Nm), 10 RPM
3rd gear	41,000 ft lb (56,000 Nm), 17 RPM
4th gear	23,000 ft lb (32,000 Nm), 29 RPM
5th gear	16,000 ft lb (22,000 Nm), 42 RPM
Reverse	116,000 ft lb (157,000 Nm), 6 RPM

[†]These are net figures. A deduction has already been taken in consideration of hydraulic and mechanical loss.

Weight

Base unit, split machine	4,200 lb (1,900 kg)
Power package, split machine	5,700 lb (2,600 kg)
Casing pusher	1,100 lb (500 kg)
Master track	3,000 lb (1,400 kg)
Extension track	2,000 lb (900 kg)

Hydraulic system

Pressure	6,000 PSI (41,370 kPa)
Thrust (max)	600,000 lb (2,669 kN)
Primary pump	Piston, load sensing with adjustable flow range
Output	38 GPM (144 L/min)
Secondary pump	Gear, 10 GPM (37.9 L/min)
Cylinders	Two 8 inch bore x 35 inch stroke (203.2 x 889 mm)
Filter	Suction: 100 micron in tank Return: 10 micron replaceable element

Accessories

American Augers supplies a full range of auger sections, dirt and rock cutting heads, hex adapters, casing size adapters, support equipment and repair components developed through our 30 years' experience in the auger boring industry.

Standard features

The model 42-600 comes with four base unit hook-roller hold-down assemblies, low center line and wide stance to provide stability and to aid in the prevention of machine roll-over. The spoil door is spring-loaded to deflect thrown debris. There is an emergency shutdown switch at the operator's station. Vivid graphics guide proper machine operation. Instruments include: engine tachometer, engine warning lights, hydraulic thrust pressure gauge. Track brake keeps machine from creeping while idling. Quick release hook rollers easily release from track. Work lights are standard equipment.

Winch

The model 42-600 has a power winch intended for rapidly pulling the boring machine back to its starting position on the track. The winch has a free-wheeling clutch to pay out wire rope. The winch can be controlled from the main hydraulic valve. The winch is not intended for pulling casing or auger sections.

Quik/Split™ design separates into parts for lighter lifts. Aligns easily, perfect positioning is not required.



Due to our continuing product improvement, specifications are subject to change without notice.

American Augers, Inc., 135 U.S. Route 42, P.O. Box 814, West Salem, OH 44287

TEL: (419) 869-7107 • FAX: (419) 869-7425 • USA Toll Free (800) 324-4930

e-mail: allsales@americanaugers.com • <http://www.americanaugers.com>