

24-150™

24 INCH (610 mm)



Horizontal Earth Boring Machine



150,000 LB THRUST!

Photo may show optional equipment

American Augers model 24-150 muscles through tough jobs.

This lightweight, low profile machine is rugged, yet powerful and dependable. It's ready for those utility construction jobs from 4 inch fiber optic ducts to 24 inch utility lines. It handles the really tough jobs with muscle to spare.

The Model 24-150 uses the DEUTZ oil cooled diesel engine. The maximum working torque is over 22,000 ft. lbs at the auger drive.

The high volume hydraulic pump delivers up to 23 GPM to three 4-inch

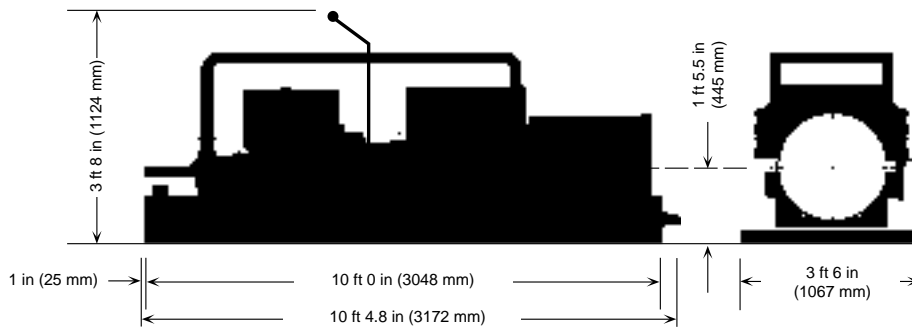
cylinders, developing 150,000 lbs maximum forward thrust.

American Augers' unitized box frame construction provided solid, lasting alignment of the power train. We have never had a frame failure in over 30 years of machine production. The low center-line and wide stance profile ensures a stable machine. Quik/Split™ design separates the boring machine into units for lighter, faster lifts into and out of the pit. The semi-automatic push bar securely locks the track dogs for a

solid push.

Machine controls are clustered for easy operation. The 24-150 has an electric starter and an emergency switch for total machine shutdown. Warning lights monitor alternator charging and engine oil pressure. The tachometer, fuel and hydraulic system gauges are in direct view. The clutch and shift levers are easily handled without strain. A spring loaded spoil chamber door deflects thrown debris. Vivid graphics guide safe and proper operation.

24-150 Earth Boring Machine



Power train

Engine type	Deutz F3L1011F diesel oil cooled with electric start
Rating	45 HP (34 kW) @3000 RPM maximum power 42 HP (31 kW) @3000 RPM continuous duty
Torque	89 ft lb (121 Nm) @1800 RPM
Fuel capacity	10 U.S. gallons (37.9 L)
Clutch	Dry, spring applied 8.5 inch (216 mm) diameter
Transmission	T18 four speed constant mesh
Ratios	1st gear — 6.32:1 2nd gear — 3.09:1 3rd gear — 1.69:1 4th gear - 1.00:1 Reverse — 7.44:1
Gearbox ratio	45.2:1
Auger drive	2.25 inch (57.15 mm) or 3 inch (76.2 mm) hex
Working range	4 to 24 inch (102 to 610 mm) casing diameter

Torque & speed (max)*

1st gear	22,200 ft lb (30,200 Nm), 11RPM
2nd gear	10,900 ft lb (14,700Nm), 21 RPM
3rd gear	5,900 ft lb (8,100 Nm), 39 RPM
4th gear	3,500 ft lb (4,800 Nm), 66 RPM
Reverse	26,200 ft lb (35,500 Nm), 9 RPM

*These are net figures. A deduction has already been taken in consideration of hydraulic and mechanical loss.

Hydraulic system

Pressure	4,000 PSI (27,580 kPa)
Thrust (max)	150,000 lb (667 kN)
Pump type	High/low gear pump
Output	23 GPM (87 L/min)
Cylinders	Three 4 inch bore x 36 inch stroke (101.6 x 914.4 mm)
Filter	Suction, 100 mesh in tank Return, 10 micron replaceable element

Weights (approximate)

Base unit, split machine	2,500 lb (1,135 kg)
Power Pack, split machine	1,800 lb (815 kg)
Casing pusher	425 lb (193 kg)
Master track	1,000 lb (454 kg)
Extension track	950 lb (430 kg)
Lift sling w/chain	60 lb (28 kg)

Accessories

American Augers supplies a full range of auger sections, dirt and rock cutting heads, hex adapters, casing size adapters, support equipment and repair components developed through our 30 years' experience in the auger boring industry.

Standard features

The model 24-150 comes with four base unit hook roller holddown assemblies, low center line and wide stance to provide stability and to aid in the prevention of machine roll-over. The spoil door is spring-loaded to deflect thrown debris. There is an emergency shutdown switch at the operator's station. Vivid graphics guide safe and proper machine operation. Instruments include: engine tachometer, engine warning lights, hydraulic thrust pressure gauge. Track brake keeps machine from creeping while idling. Quick release hook rollers easily release from track.



Due to our continuing product improvement, specifications are subject to change without notice.

American Augers, Inc., 135 U.S. Route 42, P.O. Box 814, West Salem, OH 44287

TEL: (419) 869-7107 • FAX: (419) 869-7425 • USA Toll Free (800) 324-4930

e-mail: allsales@americanaugers.com • <http://www.americanaugers.com>